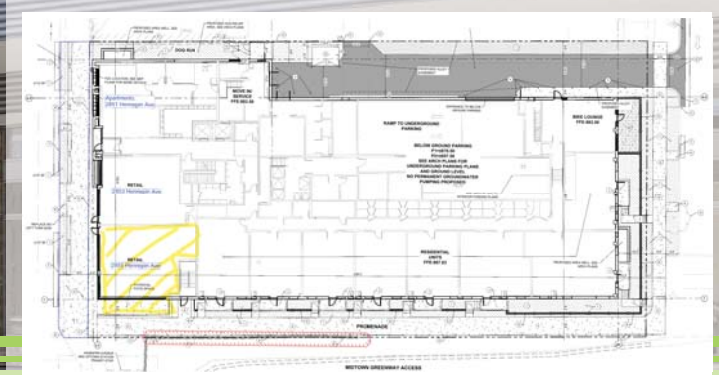


**FOR LEASE: 1,358 SF OF RETAIL IN MIXED USE APT. PROJECT**



**FEATURES**

- First floor Retail in new mixed-use apartment project
- Prominent location on Hennepin by the Lagoon/Lake Street Commercial corridor
- Situated on the Greenway – popular with bicycle commuters and recreational cyclists
- Commercial corridor that connects the lakes, with 94, Loring Park, & Downtown
- Neighborhood boasts vibrant commercial corridor, arts/culture, good transit
- City Lakes, Regional trails, Arts, Food, and Nightlife make this an attractive trade area for retail and food
- Area tenants include Lund's & Byerly's Grocery, Cub Grocery, Target, McDonalds, Walgreens, Sooki & Mimi, Frattalone's Hardware, Hennepin County Library, Troubadour Wine Bar, Barbette, Hirschfield's, Red Cow, Stilo Cuts Barber, Uptown Diner, Nico's Tacos, Magers & Quinn, Penzy's Spice, Amazing Thailand, YWCA, Uptown Transit Station, Uptown Theatre, Calhoun Square/Seven Points Mall



**RETAIL FOR LEASE HENNEPIN & THE GREENWAY**

2855 Hennepin - Minneapolis, MN 55408

Bloom Commercial Real Estate  
10050 Crosstown Circle - Suite 600  
Eden Prairie, MN 55344  
www.bloomcommercial.com



# DEMOGRAPHICS

## 5 MINUTES

EMPLOYEES - 20,947

POPULATION - 53,858

MEDIAN INCOME - \$71,671

## 10 MINUTES

EMPLOYEES 304,952

POPULATION 276,008

MEDIAN INCOME - \$71,064

## 15 MINUTES

EMPLOYEES 619,523

POPULATION 748,142

MEDIAN INCOME - \$78,813

HENNEPIN 16,500 VPD

LAGOON 16,100 VPD

LAKE 15,300 VPD

## FOR MORE INFORMATION:

Josh Bloom, Principal  
651.207.3157 (text or call)  
josh@bloomcommercial.com

Mike Belzer, Associate  
651.226.1838 (text or call)  
mike@bloomcommercial.com

