



FOR LEASE

GANDER OUTDOORS

10470 HUDSON ROAD WOODBURY, MN 55129

SQUARE FOOTAGE:

67,102 SF

FEATURES:

- Freeway Visible to Interstate 94
- Great Visibility and Traffic Counts
- Surrounding Area Tenants: Best Buy, Aldi, Target, McDonald's, Starbucks, Arby's, Petsmart, Jo-Ann Fabrics, The Home Depot, and Cabala's
- Variety of Housing Units & Developments
- Woodbury is proud to host some of it's greater attractions: Oak Marsh Golf Course and the Woodbury Lakes



**FOR MORE INFORMATION
PLEASE CONTACT:**

Josh Bloom
Principal
651.207.3157

josh@bloomcommercial.com

Tim Bloom
Principal
651.319.5011

tim@bloomcommercial.com

| EST. DEMOGRAPHICS | 1 MILE | 2 MILES | 3 MILES | 5 MILES |
|------------------------------|-------------|---------|---------|---------|
| Total Businesses | 187 | 765 | 1,492 | 3,358 |
| Total Employees | 2,407 | 9,271 | 18,281 | 41,648 |
| Total Residential Population | 3,752 | 18,890 | 37,123 | 97,893 |
| TRAFFIC COUNTS | | | | |
| I 94 | 83,000 VPD | | | |
| Woodbury Drive | 300,030 VPD | | | |
| Hudson Road | 11,967 VPD | | | |

GANDER OUTDOORS

10470 HUDSON ROAD WOODBURY, MN 55129

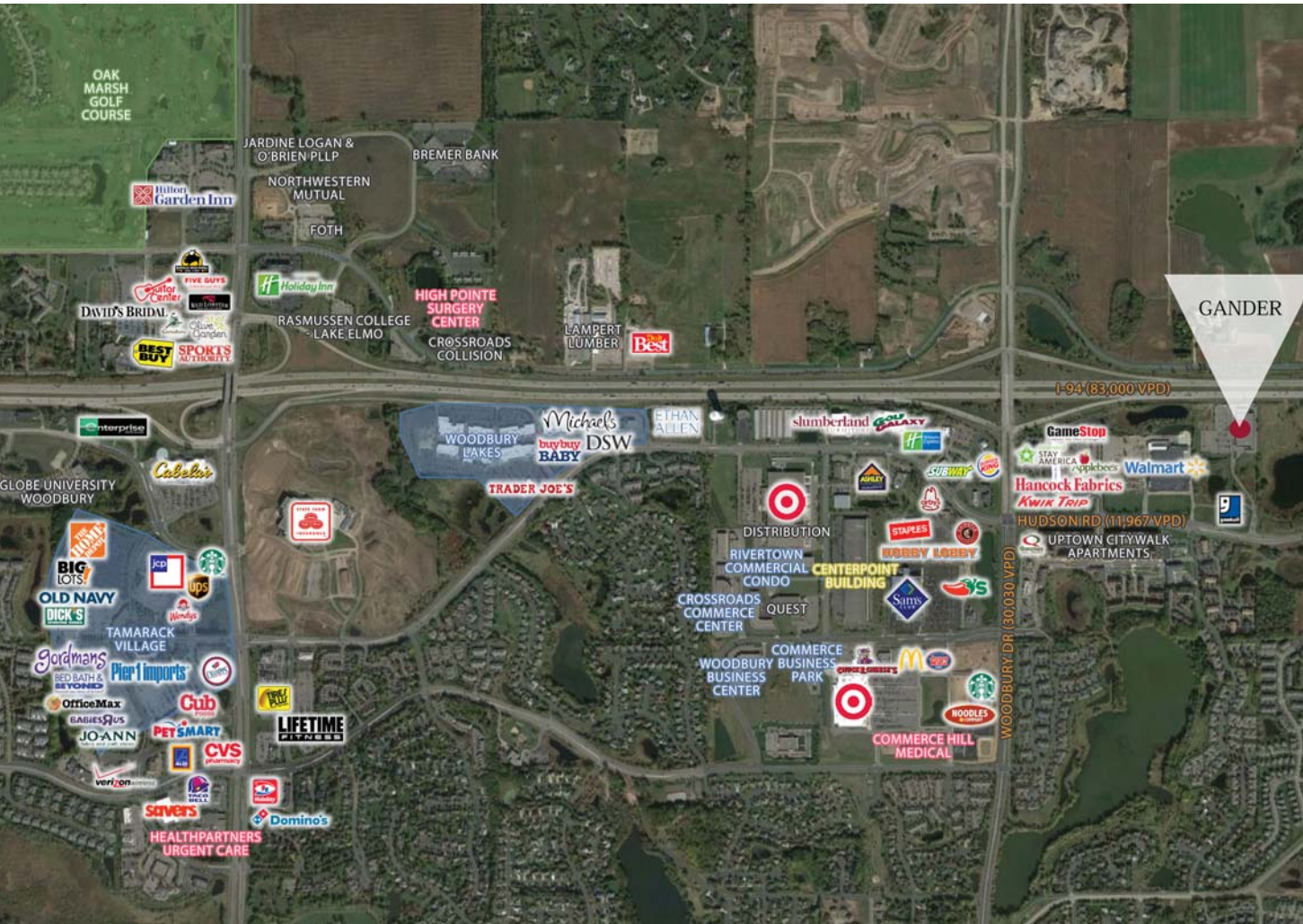
FOR LEASE

SQUARE FOOTAGE:

67,102 SF

FEATURES:

- Freeway Visible to Interstate 94
- Great Visibility and Traffic Counts
- Surrounding Area Tenants: Best Buy, Aldi, Target, McDonald's, Starbucks, Arby's, Petsmart, Jo-Ann Fabrics, The Home Depot, and Cabala's
- Variety of Housing Units & Developments
- Woodbury is proud to host some of it's greater attractions: Oak Marsh Golf Course and the Woodbury Lakes



Josh Bloom
Principal
651.207.3157
josh@bloomcommercial.com

Tim Bloom
Principal
651.319.5011
tim@bloomcommercial.com

Bloom Commercial Real Estate
527 Marquette Ave, Suite 500
Minneapolis, MN 55402
www.bloomcommercial.com

