

SOUTH POND SHOPPING CENTER

11350 NORTH AQUILA DRIVE CHAMPLIN, MN 55316

FOR LEASE

Join Our Newest Tenant...
Kids Rack Clothing Store!



BCRE

bloom commercial real estate

BUILDING SIZE:

27,000 SF

AVAILABLE SQUARE FOOTAGE:

Minimum Divisible - 1,872 SF

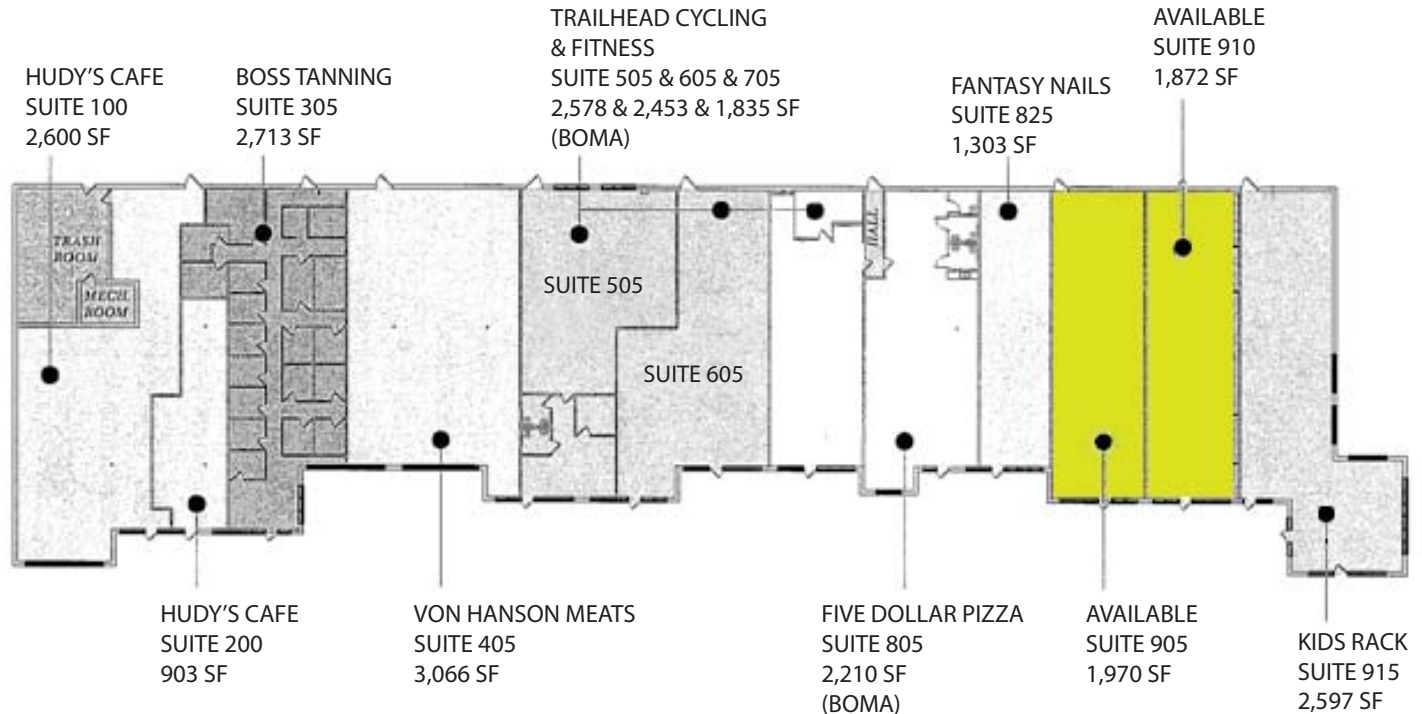
Maximum Contiguous - 3,842 SF

FEATURES:

Next to new Chipotle; Starbucks Coffee; LeeAnn Chin; Sport Clips; Pacific Dental; AT & T.

Also shadow anchored by CUB Foods

Busy Shopping Center



FOR MORE INFORMATION PLEASE CONTACT:

Josh Bloom
Senior Associate/Principal
651.315.7863
josh@bloomcommercial.com

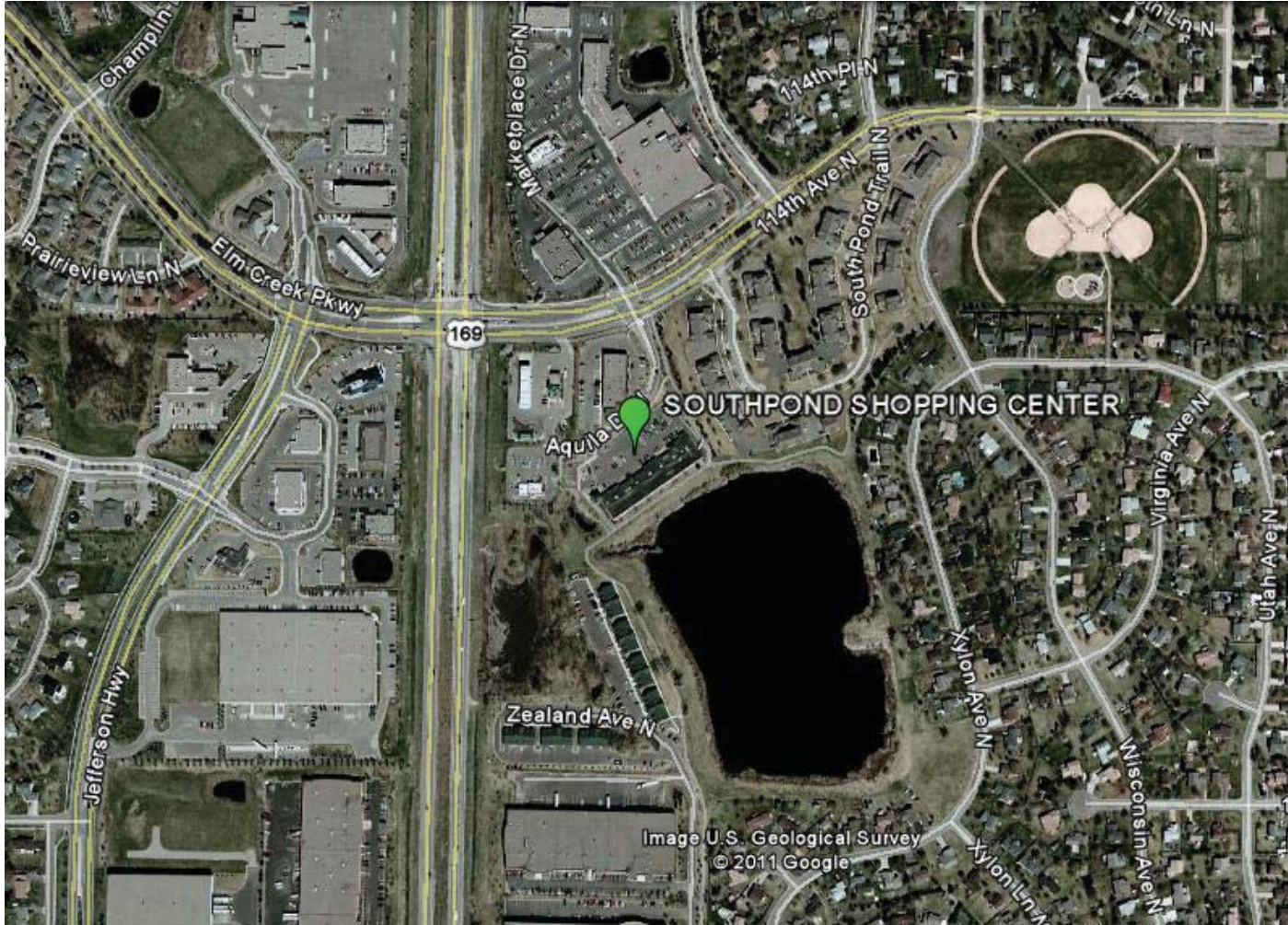
Tim Bloom
Principal
651.319.5011
tim@bloomcommercial.com



Vibrant retail center located in the heart of Champlin. Strong co-tenancy in this retail center, and also synergy of with quality area tenants. Southpond center is located on the going home side of the street, and shadow anchored with Cub Foods grocery store.

SOUTH POND SHOPPING CENTER

11350 NORTH AQUILA DRIVE CHAMPLIN, MN 55316



PARKING RATIO:

128 Stalls

YEAR BUILT:

1998

OPERATING EXPENSES:

TOTAL = \$8.51

FOR MORE INFORMATION PLEASE CONTACT:

Josh Bloom
Senior Associate/Principal
651.315.7863
josh@bloomcommercial.com

Tim Bloom
Principal
651.319.5011
tim@bloomcommercial.com

Bloom Commercial Real Estate
527 Marquette Ave, Suite 500
Minneapolis, MN 55402
www.bloomcommercial.com



EST. DEMOGRAPHICS

1 MILE

3 MILES

5 MILES

Population

7,798

58,941

157,648

Daytime Population

2,156

25,611

77,795

2010 Median HH Income

\$102,382

\$80,412

\$78,100